

39°15'N 93°24'W 39°14'N 93°23'W



Notes

Waverly Gage = 15.28 at time of collection 26 May 2021"

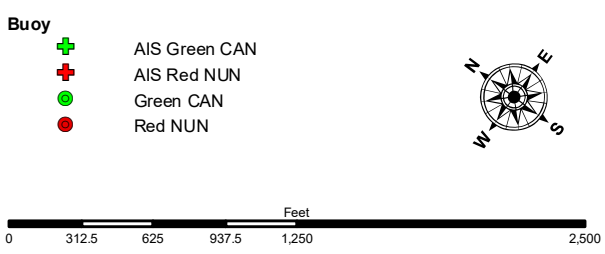
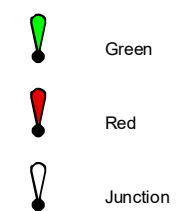
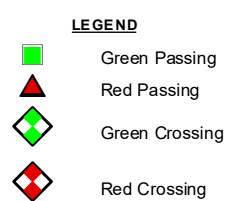
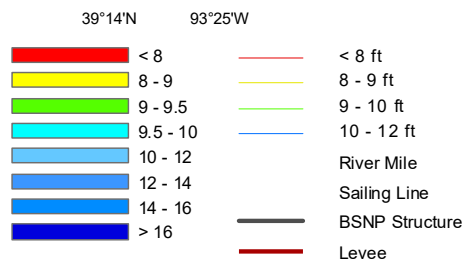
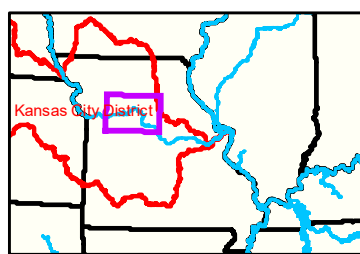
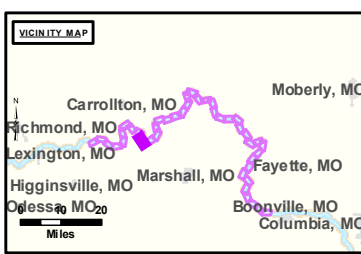
Gage_L

93°25'W

93°23'W

39°13'N

93°24'W



NOTES:
 Horizontal Coordinate System:
 World Geodetic System of 1984 (WGS84), projected to the
 Universal Transverse Mercator (UTM) Zone 15 North.
 Distance units in U.S. Survey Feet

Vertical Datum:
 Soundings are shown in feet and indicated depths
 are referenced to water surface at time of collection.

The information depicted on this map represents the results of a survey
 conducted on the date indicated and can only be considered
 to represent the general condition existing at that time.

The location of navigation aids are based on and provided by
 the U.S. Coast Guard.



US Army Corps
 of Engineers
 District: CENWK

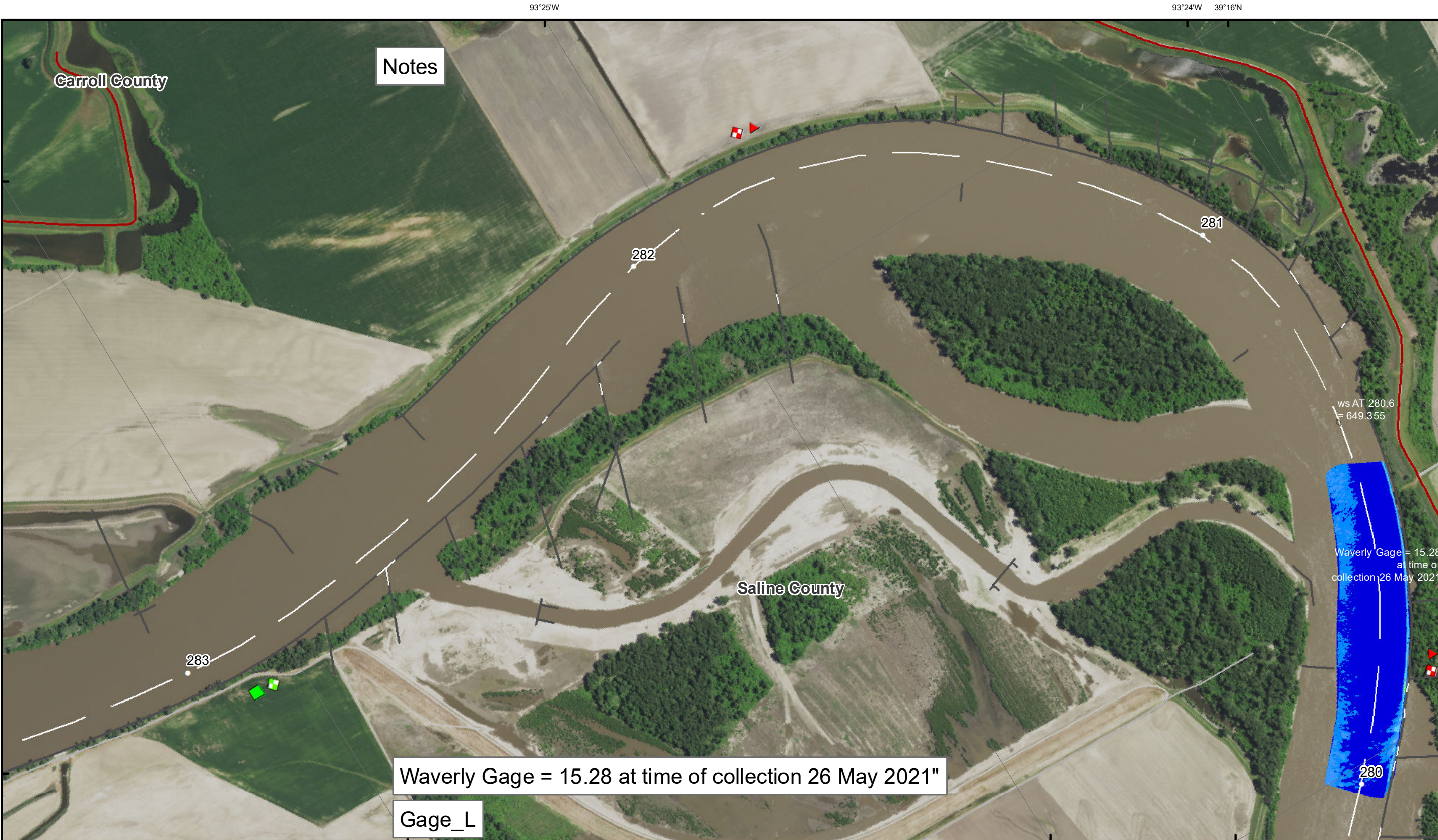
Disclaimer: The U.S. Army Corps of Engineers is not responsible for the use of this information for any purpose other than that for which it was intended. The Corps makes no warranty, express or implied, for the use of this information for any purpose other than that for which it was intended. The Corps is not liable for any damages, including consequential damages, arising from the use of this information.

KANSAS CITY DISTRICT MISSOURI RIVER AREA OFFICE	
Submitted By:	MRAO
Reviewed By:	MRAO
Checked By:	MRAO

Survey Information

MO_03_LMR
 MO_03_LMR_20210526_CS_280_0_280_5_SORT
 26 May 2021

**Sheet
 Number
 33 of 42**



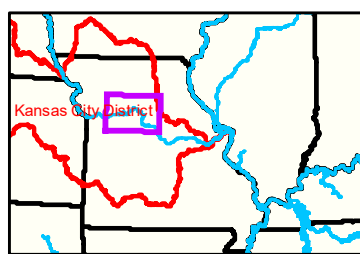
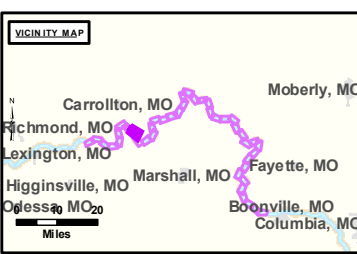
Notes

Waverly Gage = 15.28 at time of collection 26 May 2021"

Gage_L

ws AT 280.6 = 649.355

Waverly Gage = 15.28 at time of collection 26 May 2021



LEGEND

	< 8		< 8 ft		Green Passing		Green		AIS Green CAN
	8 - 9		8 - 9 ft		Red Passing		Red		AIS Red NUN
	9 - 9.5		9 - 10 ft		Green Crossing		Green		Green CAN
	9.5 - 10		10 - 12 ft		Red Crossing		Red		Red NUN
	10 - 12		River Mile						
	12 - 14		Sailing Line						
	14 - 16		BSNP Structure						
	> 16		Levee						

Buoy

	Green		AIS Green CAN
	Red		AIS Red NUN
	Green		Green CAN
	Red		Red NUN

Junction

	Green
	Red

Scale: 0 312.5 625 937.5 1,250 2,500 Feet

NOTES:
Horizontal Coordinate System: World Geodetic System of 1984 (WGS84), projected to the Universal Transverse Mercator (UTM) Zone 15 North. Distance units in U.S. Survey Feet.
Vertical Datum: Soundings are shown in feet and indicated depths are referenced to water surface at time of collection.
The information depicted on this map represents the results of a survey conducted on the date indicated and can only be considered to represent the general condition existing at that time.
The location of navigation aids are based on and provided by the U.S. Coast Guard.



DISCLAIMER: The U.S. Army Corps of Engineers (USACE) provides this information for informational purposes only. It is not intended for use in any legal proceeding or as a basis for any claim. The USACE makes no warranty, express or implied, regarding the accuracy, completeness, or timeliness of the information provided. The USACE is not responsible for any errors or omissions in this information. The information is provided as is, without any guarantee of accuracy or reliability. The user assumes all responsibility for the use of this information. The USACE is not liable for any damages, including consequential damages, arising from the use of this information. The information is provided for informational purposes only and should not be used for any other purpose.

KANSAS CITY DISTRICT MISSOURI RIVER AREA OFFICE	
Submitted By:	MRAO
Reviewed By:	MRAO
Approved By:	MRAO

Survey Information

MO_03_LMR
MO_03_LMR_20210526_CS_280_0_280_5_SORT
26 May 2021

Sheet Number
34 of 42